

1990 UNC STATISTICS

Record: 6-4-1 Overall, 3-3-1 ACC

OPPONENT	RESULTS	ATTEN.
Miami of Ohio	W 34-0	47,500
at South Carolina	L 5-27	73,500
Connecticut	W 48-21	41,000
Kentucky	W 16-13	43,000
N.C. State	L 9-12	53,000
at Wake Forest	W 31-24	27,711
Georgia Tech	T 13-13	48,000
Maryland	W 34-10	46,000
at Clemson	L 3-20	77,000
Virginia	L 10-24	41,000
at Duke	W 24-22	31,600

TEAM STATISTICS	UNC	OPP
First Downs	176	210
(by rushing)	104	86
(by passing)	65	104
(by penalty)	7	20
Total Plays	756	837
Total Yardage	3355	3620
Total Yards Per Game	305.0	329.1
Plays Rushing	502	467
Yards Rushing	1781	1349
Yards Rushing Per Game	161.9	122.6
Yards Passing	1574	2271
Yards Passing Per Game	143.1	206.5
Passes Attempted	254	370
Passes Completed	128	182
Passes Had Intercepted	7	15
Fumbles-Fumbles Lost	23-12	29-16
Penalties-Yardage	60-578	70-553
Third Down Conversions	52-176	71-192
Third Down Percentage	.295	.370
Fourth Down Conversions	6-9	9-18

SCORING	1st	2nd	3rd	4th	Total
North Carolina	57	63	41	66	227
Opponents	79	60	13	34	186

INDIVIDUAL STATISTICS	ATT	GAIN	LOSS	NET	AVE	TD	LP
Means, tb	168	873	24	849	5.1	10	76
Blount, tb	92	421	40	381	4.1	2	46
Faulkerson, fb	61	186	6	180	3.0	2	12
Watkins, tb	34	137	5	132	3.9	0	22
Marshall, tb	48	131	7	124	2.6	2	10
Felton, wr	5	70	0	70	14.0	0	27
Runyon, fb	15	70	1	69	4.6	0	16
Jerry, qb	16	58	9	49	3.1	0	15
Williams, fb	4	33	0	33	8.3	0	17
D. Henderson, tb	2	9	0	9	4.5	0	6
Jauch, wr	3	19	15	4	1.3	0	13
Atkinson, tb	1	0	2	-2	—	0	—
Burnette, qb	9	19	22	-3	—	0	13
Burnett, qb	44	74	188	-114	—	0	14
UNC TOTALS	502	2100	319	1781	3.5	16	76
OPP TOTALS	467	1752	403	1349	2.9	5	44

PASSING	CMP	ATT	INT	PCT	YDS	TD	LP
Burnett, qb	112	219	6	.511	1339	4	72
Burnette, qb	16	32	1	.500	235	0	46
Blount, tb	0	1	0	.000	0	0	—
Jerry, qb	0	2	0	.000	0	0	—
UNC TOTALS	128	254	7	.504	1574	4	72
OPP TOTALS	182	370	15	.492	2271	14	76

PUNTING	NO	YDS	AVE	BLK	LP
McAlister, p	79	3433	43.5	0	62
UNC TOTALS	79	3433	43.5	0	62
OPP TOTALS	78	3052	39.1	1	62

PASS RECEIVING	CGT	YDS	AVE	TD	LP
Holliday, wr	28	488	17.4	1	57
Means, tb	24	229	9.5	1	72
Reese, wr	23	291	12.7	0	42
Blount, tb	13	92	7.1	0	18
Watkins, tb	10	103	10.3	0	24
Jauch, wr	8	100	12.5	0	29
Felton, wr	7	51	7.3	1	20
Brooks, wr	5	96	19.2	1	46
May, te	5	74	14.8	0	35
Faulkerson, fb	3	17	5.7	0	7
Runyon, fb	2	33	16.5	0	22
UNC TOTALS	128	1574	12.3	4	72
OPP TOTALS	182	2271	12.5	14	76

KICKOFF RETURNS	NO	YDS	AVE	TD	LP
Blount, tb	25	604	24.2	0	41
Means, tb	2	31	15.5	0	18
Brooks, wr	1	25	25.0	0	25
Holliday, wr	1	12	12.0	0	12
Faulkerson, fb	1	7	7.0	0	7
UNC TOTALS	30	679	22.6	0	41
OPP TOTALS	44	739	16.8	0	41

PUNT RETURNS	NO	YDS	AVE	TD	LP
Felton, wr	28	190	6.8	1	54
Blount, tb	19	111	5.8	0	18
Winslow, db	1	13	13.0	0	13
UNC TOTALS	48	314	6.5	1	54
OPP TOTALS	46	336	7.3	0	37

INTERCEPTION RETURNS	NO	YDS	TD	LP
Massey, db	5	109	1	87
Smith, db	3	68	1	44
Baskerville, db	3	28	0	28
Crocker, db	2	0	0	—
Thigpen, lb	1	12	0	12
Jones, db	1	5	0	5
UNC TOTALS	15	222	2	87
OPP TOTALS	7	129	1	49

FUMBLE RETURNS	NO	YDS	TD	LP
Thigpen, lb	1	11	0	11
UNC TOTALS	1	11	0	11
OPP TOTALS	1	4	0	4

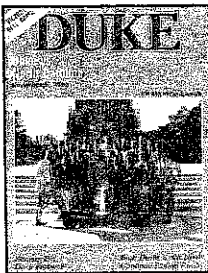
FIELD GOALS	0-29	30-39	40-49	50+	TOT	LP
Gwaltney, ks	7-7	7-9	6-9	1-2	21-27	50
UNC TOTALS	7-7	7-9	6-9	1-2	21-27	50
OPP TOTALS	2-2	6-7	6-8	1-2	15-19	56

SCORING	TD	CONV-ATT	CONV-MA	FG-A	PTS
Gwaltney, ks	0	t r k	t r k		21-27 85
Means, tb	11	0 1 0	0 0 1	0 0	0-0 68
Blount, tb	2	0 0 0	0 0 0	0 0	0-0 12
Marshall, tb	2	0 0 0	0 0 0	0 0	0-0 12
Felton, wr	2	0 0 0	0 0 0	0 0	0-0 12
Faulkerson, fb	2	0 0 0	0 0 0	0 0	0-0 12
Holliday, wr	1	0 0 0	0 0 0	0 0	0-0 6
Brooks, wr	1	0 0 0	0 0 0	0 0	0-0 6
Massey, db	1	0 0 0	0 0 0	0 0	0-0 6
Smith, tb	1	0 0 0	0 0 0	0 0	0-0 6
*UNC TOTALS	23	0 1 22	0 1 22	21-27	227
OPP TOTALS	20	1 0 19	1 0 19	15-19	186

* UNC scored a safety vs. South Carolina

1990 CAROLINA DEFENSIVE STATISTICS										
PLAYER	T	A	HITS	FC	FR	PBU	PRES	TFL-YDS	SACKS	INT
Hollier, lb	87	68	155	2	3	0	3	8-18	4-11	0
Thigpen, lb	65	46	111	0	2	2	9	12-58	7-45	1
Gash, olb	56	27	83	2	1	5	6	13-54	5-26	0
Jones, db	50	30	80	2	0	5	0	1-2	0	1
Timmons, lb	39	35	74	0	0	0	4	2-8	1-7	0
Massey, db	41	25	66	1	1	2	3	4-34	2-24	5
Perry, olb	28	38	66	1	0	2	4	9-35	6-28	0
Barker, dt	45	18	63	2	1	2	15	10-51	6-39	0
Tripp, dt	32	26	58	1	0	2	13	5-30	4-28	0
Jordan, db	34	13	47	1	1	2	0	0	0	0
Walker, db	24	18	42	2	0	0	0	0	0	0
Boldin, ng	27	11	38	0	2	0	5	4-17	2-9	0
Simakas, ng	24	14	38	1	0	0	7	3-13	0	0
Robbins, dt	23	14	37	0	1	0	6	3-12	3-12	0
Clark, olb	23	13	36	0	1	1	1	4-10	1-6	0
Curt Brown, dt	18	16	34	0	1	0	1	5-33	4-31	0
Steinbacher, lb	18	14	32	0	1	0	0	2-10	0	0
Baskerville, db	20	10	30	0	0	9	0	0	0	3
Smith, db	18	7	25	0	0	2	0	2-3	0	3
Crocker, db	8	4	12	0	0	6	0	0	0	2
Parker, dt	4	8	12	0	0	0	0	0	0	0
Causey, lb	8	3	11	0	0	0	0	0	0	0
Jacobs, lb	5	3	8	0	0	1	0	0	0	0
Harris, olb	4	2	6	0	0	0	0	0	0	0
Gibson, db	4	1	5	0	0	0	0	0	0	0
Payne, olb	1	3	4	0	0	0	0	0	0	0
Albright, ds	2	1	3	0	0	0	0	0	0	0
McAlister, p	2	0	2	0	0	0	0	0	0	0
Winslow, db	1	1	2	0	0	0	0	0	0	0
Hopkins, lb	0	2	2	0	1	0	0	0	0	0
Griese, db	1	0	1	0	0	0	0	0	0	0
Wilson, ds	0	1	1	0	0	0	0	0	0	0

BLOCKED KICKS: Winslow
T—tackles; A—assists; FC—fumbles caused; FR—fumbles recovered; PBU—passes broken up; PRES—pressing passer into a hurried throw; TFL—tackles for losses; INT—interceptions.



North Carolina 24
Duke 22

November 17, 1990
 Wallace Wade Stadium
 Durham, N.C.

DURHAM, N.C. — Freshman tailback Natrone Means rushed 37 times for 256 yards and three touchdowns and punter Scott McAlister had an all-star afternoon as North Carolina outlasted Duke, 24-22 at Wallace Wade Stadium.

The win was the first for the Tar Heels versus the Blue Devils since 1986 and secured Carolina's first winning season in four years.

Means put together a smashing performance which was the sixth-best rushing total in Carolina history and the seventh-best in the annals of the Atlantic Coast Conference. It was the most yards by an ACC back since Kennard Martin rolled up 291 yards at Duke's expense in 1988. In fact, it was the sixth time a UNC back has topped 200 yards against the Blue Devils. Means could have become only the second Tar Heel player to ever rush for more than 300 yards, but a 50-yard touchdown to open the third quarter was nullified due to a holding penalty.

Means began the afternoon in grand style, taking Carolina's first play from scrimmage around the left end, 76 yards for a touchdown. It was the longest run by a Tar Heel since 1984 and the longest run from scrimmage ever by a Carolina freshman.

Duke tied the game at 7-7 five plays later. Quarterback Dave Brown, who would finish the day with 337 yards, hit Randy Jones for a 42-yard touchdown.

Carolina responded on its next series, though, with a 67-yard scoring march on eight consecutive running plays. Means ran three times for 20 yards, Mike Faulkerson three for 13 and Eric Blount twice for 34 yards. Means capped the drive with a nine-yard scoring sweep and Carolina led 14-7 with 3:50 left in the opening quarter.

The Tar Heels scored again on their final possession of the half. Chuckie Burnette, making his first start of the season, connected with Corey Holliday for 42 yards to set up the score. Clint Gwaltney kicked a 33-yard field goal with 27 seconds left on the clock to up the lead to 17-7. It was Gwaltney's 21st field goal and established a Carolina single-season record.

Means began the third quarter just as he did the first. Following a seven-yard pickup on first down, he rattled off a 50-yard touchdown, but it came back because of a holding penalty. Two plays later, Burnette was picked off and Duke turned the miscue into seven points. Randy Cuthbert went 21 yards around the right side for a touchdown and narrowed the Tar Heels' lead to 17-14. The touchdown was the first one allowed by the Tar Heels in the third quarter the entire season.

The rest of the third quarter was a punting exhibition and McAlister put on a show. While Duke's three punts in that quarter went for 31, 31 and 42 yards, McAlister continually backed up the Blue Devils with kicks of 41, 51 and 62 yards. McAlister would close out the day with nine punts for an average of 45.7 yards.

Carolina scored its final and eventual game-winning points on its first series in the fourth quarter. Means opened the quarter with a 28-yard scamper and then finished the drive with a one-yard plunge with 12:39 left in the game. The touchdown gave the Heels a 24-14 lead.

Cookie Massey thwarted the Blue Devils' next drive with his team-leading fifth interception. McAlister continued his stellar play with a 53-yard ef-

fort and then with just 3:19 left, he deadened a 37-yard punt at the Duke one yard line.

The Blue Devils did drive 99 yards for a touchdown and was successful on a two-point conversion pass which cut the Tar Heels' advantage to 24-22. But only 48 seconds remained and UNC secured the Victory Bell as tight end Deems May recovered an attempted onside kick.

North Carolina	14	3	0	7	—	24
Duke	7	0	7	8	—	22

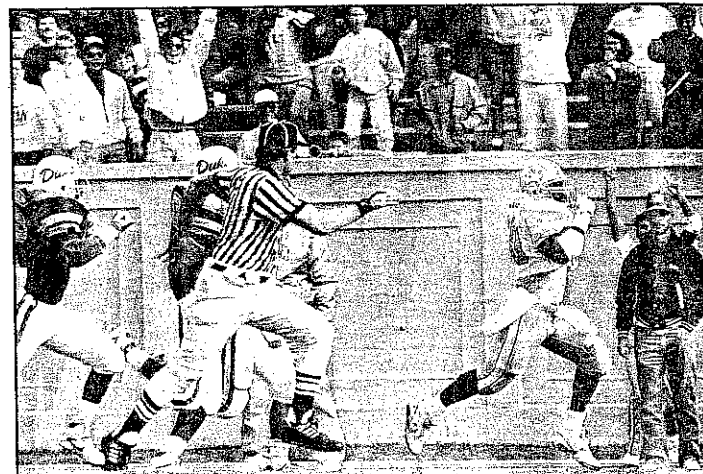
	NC	DU
First Downs	15	24
Rushes-Yards	57-319	34-103
Passing Yardage	48	337
Passing (C-A-I)	4-12-1	25-47-1
Plays-Total Offense	69-367	81-440
Return Yardage	22	61
Punts	9-45.7	11-35.6
Fumbles-Lost	1-0	1-0
Penalties/Yardage	7/60	10/73

Individual Rushing:
 NC- Means 37-256, Blount 5-43, Faulkerson 7-13, Jauch 1-6, Burnett 1-(-1), Burnette 6-(-3)

DU- Cuthbert 14-77, R. Jones 7-24, C. Brown 5-17, W. Jones 1-13, Dorsey 1-(-11), D. Brown 6-(-17)

Individual Passing:
 NC- Burnette 4-10-48-1, Burnett 0-2-0-0
 DU- D. Brown 25-47-337-1

Individual Receiving:
 NC- Means 2-4, Holliday 1-42, Blount 1-2
 DU- Cuthbert 5-31, R. Jones 4-49, Mays 4-42, Farguhar 3-26, Clements 2-47, Dorsey 2-38, C. Brown 2-27, W. Jones 1-42, Breedlove 1-26, Clark 1-9



Natrone Means scampered 76 yards for a touchdown on UNC's first play from scrimmage in Carolina's 24-22 win over arch-rival Duke.

1990 Carolina Superlatives

Category	Individual Best
Rushing Attempts	*37 by Natrone Means vs Duke
Rushing Yards	*256 by Natrone Means vs Duke
Rushing TDs	3 by Natrone Means vs Duke
Longest Non-Scoring Run from Scrimmage	29 yards by Natrone Means vs Duke
Longest TD Run	76 yards by Natrone Means vs Duke
Pass Attempts	35 by Todd Burnett vs Maryland
Pass Completions	23 by Todd Burnett vs Maryland
Passing Yards	312 by Todd Burnett vs Maryland
Passing TDs	one, four different times
Longest Non-Scoring Pass Play	57 yards, Burnett to Holliday vs Maryland
Longest TD Pass Play	72 yards, Burnett to Means vs Wake Forest
Completion Pct.	.739 (17-for-23) by Todd Burnett vs Wake Forest
Receptions	7 by Corey Holliday and Julius Reese vs Maryland
Receiving Yards	134 by Corey Holliday vs Maryland
Most Plays	44 by Todd Burnett vs Maryland (35 pass, 9 run)
Most Yards Total Offense	315 yards by Todd Burnett vs Maryland (312 pass, 3 run)

Category	Individual Best
Points	18 by Natrone Means by Wake Forest and Duke
Extra Points Made	Six by Clint Gwaltney vs Maryland (six-for-six)
Field Goals Made	**Four by Clint Gwaltney vs Maryland (four-for-six)
Longest Field Goal	50 yards by Clint Gwaltney vs Kentucky
Punts	**10 by Scott McAlister vs N.C. State
Punt Average	**50.0 by Scott McAlister (three for 150 yards)
Longest Punt	62 yards by Scott McAlister vs Duke
Tackles	**21 by Dwight Hollier vs Georgia Tech and Virginia
Interceptions	one, 15 different times
Longest Interception Return	*87 yards (TD) by Cookie Massey vs Connecticut
Longest Kickoff Return	41 yards by Eric Blount vs Virginia
Kickoff Return Yards	128 yards on five returns by Eric Blount vs Virginia
Longest Punt Return	54 yards (TD) by Randall Felton vs Miami
Punt Return Yards	85 yards on seven returns by Randall Felton vs Miami

* indicates ACC best in 1990

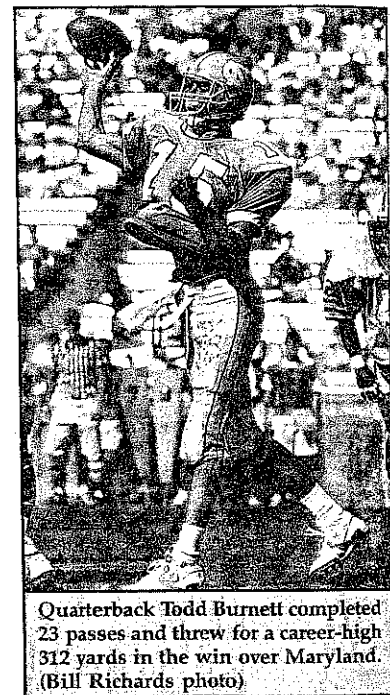
** indicates tied ACC best in 1990

1990 GAME-BY-GAME OFFENSIVE STATISTICS

RUSHING	Means	Blount	Faulkerson	Watkins	Marshall
Game	ATT-YDS-TD	ATT-YDS-TD	ATT-YDS-TD	ATT-YDS-TD	ATT-YDS-TD
Miami	4-13-0	22-74-1	7-24-1	9-45-0	3-7-0
South Carolina	DNP	21-46-0	7-17-0	4-8-0	2-5-0
Connecticut	11-71-2	3-62-0	7-26-0	5-20-0	17-66-0
Kentucky	13-50-1	21-114-0	1-4-0	3-6-0	2-3-0
N.C. State	4-12-0	15-30-0	4-16-0	3-12-0	3-4-0
Wake Forest	24-134-2	—	6-17-0	9-36-0	5-3-1
Georgia Tech	20-79-1	—	7-26-0	1-5-0	4-8-0
Maryland	25-111-1	3-10-0	7-26-0	INJ	11-27-0
Clemson	13-37-0	1-(-5)-0	4-4-0	INJ	1-1-0
Virginia	17-86-0	2-18-0	4-2-1	INJ	—
Duke	37-256-3	5-43-0	7-18-0	INJ	DNP

PASSING	Burnett	Burnette
Game	CMP-ATT-YDS-INT-TD	CMP-ATT-YDS-INT-TD
Miami	7-14-46-0-1	1-3-2-0-0
South Carolina	11-26-115-2-0	DNP
Connecticut	14-25-186-1-1	0-1-0-0-0
Kentucky	4-12-108-0-0	DNP
N.C. State	6-19-71-1-0	DNP
Wake Forest	17-23-254-0-1	1-146-0-0
Georgia Tech	8-20-48-0-0	DNP
Maryland	23-35-312-1-1	DNP
Clemson	14-22-126-1-0	4-10-31-0-0
Virginia	7-20-71-0-0	6-7-108-0-0
Duke	0-2-0-0-0	4-10-48-1-0

RECEIVING	Holliday	Means	Reese	Blount
Game	REC-YDS-TD	REC-YDS-TD	REC-YDS-TD	REC-YDS-TD
Miami	2-28-0	1-2-0	0-0-0	2-(-5)-0
South Carolina	1-16-0	DNP	3-35-0	2-9-0
Connecticut	1-57-1	1-11-0	3-14-0	1-11-0
Kentucky	1-17-0	0-0-0	1-42-0	1-14-0
N.C. State	2-31-0	0-0-0	0-0-0	1-4-0
Wake Forest	5-79-0	3-78-1	4-46-0	0-0-0
Georgia Tech	1-3-0	4-16-0	0-0-0	0-0-0
Maryland	7-134-0	4-62-0	7-68-0	1-18-0
Clemson	2-25-0	5-35-0	3-33-0	3-25-0
Virginia	5-56-0	3-19-0	2-53-0	1-14-0
Duke	1-42-0	2-4-0	0-0-0	1-2-0



Quarterback Todd Burnett completed 23 passes and threw for a career-high 312 yards in the win over Maryland. (Bill Richards photo)

KICKING	Gwaltney	McAlister
	PAT/Field Goals	Punts-Ave-LP
Miami	4-4/36, 36, 41	9-45.7-57
South Carolina	0-0/48, 31	8-44.0-51
Connecticut	6-6/27, 46, 42	3-50.0-51
Kentucky	1-1/21, 37, 50	7-40.3-58
N.C. State	0-0/48, 50, 41, 21	10-43.6-50
Wake Forest	4-4/32	6-41.3-53
Georgia Tech	1-1/32, 25	9-42.3-54
Maryland	2-2/36, 25, 27, 36, 42, 20	4-41.5-60
Clemson	0-0/41	-40.6-50
Virginia	1-1/47	7-42.3-50
Duke	3-3/33	9-45.7-62

Boldface indicates field goal made

1990 STARTERS

OFFENSE

Opponent	SE	LT	LG	C	RG	RT	TE	QB	FB	TB	FL
Miami	Holliday	Donnalley	Bollinger	Lindsey	Dinkin	Oberg	May	Burnett	Faulkerson	Blount	Jauch
South Carolina	Holliday	Donnalley	Bollinger	Lindsey	Dinkin	Oberg	May	Burnett	Faulkerson	Blount	Jauch
Connecticut	Reese	Donnalley	Bollinger	Lindsey	Dinkin	Oberg	May	Burnett	Faulkerson	Blount	Jauch
Kentucky	Reese	Donnalley	Bollinger	Lindsey	Dinkin	Oberg	May	Burnett	Faulkerson	Blount	Jauch
N.C. State	Reese	Donnalley	Bollinger	Lindsey	Dinkin	Shaw	May	Burnett	Faulkerson	Blount	Jauch
Wake Forest	Reese	Donnalley	Bollinger	Parsons	Dinkin	Oberg	Holliday*	Burnett	Faulkerson	Means	Jauch
Georgia Tech	Holliday	Donnalley	Bollinger	Parsons	Dinkin	Oberg	May	Burnett	Faulkerson	Means	Jauch
Maryland	Holliday	Donnalley	Bollinger	Parsons	Dinkin	Oberg	Reese*	Burnett	Faulkerson	Means	Jauch
Clemson	Reese	Donnalley	Bollinger	Parsons	Dinkin	Oberg	May	Burnett	Faulkerson	Means	Jauch
Virginia	Holliday	Donnalley	Bollinger	Parsons	Dinkin	Oberg	Reese*	Burnett	Faulkerson	Means	Jauch
Duke	Reese	Donnalley	Bollinger	Parsons	Dinkin	Oberg	May	Burnette	Faulkerson	Means	Jauch

*—Carolina started three wide receivers vs. Wake Forest, Maryland and Virginia

DEFENSE

Opponent	OLB	LT	NG	RT	OLB	LB	LB	SS	CB	FS	CB
Miami	Gash	Barker	Simakas	Tripp	Perry	Hollier	Timmons	Massey	Jordan	Jones	Baskerville
South Carolina	Gash	Barker	Simakas	Tripp	Perry	Hollier	Timmons	Massey	Jordan	Jones	Baskerville
Connecticut	Gash	Barker	Simakas	Tripp	Perry	Hollier	Thigpen	Massey	Jordan	Jones	Crocker
Kentucky	Gash	Barker	Simakas	Tripp	Perry	Hollier	Thigpen	Massey	Th. Smith	Jones	Baskerville
N.C. State	Gash	Barker	Boldin	Tripp	Perry	Hollier	Thigpen	Massey	Th. Smith	Jones	Baskerville
Wake Forest	Gash	Robbins	Boldin	Tripp	Perry	Hollier	Timmons	Massey	Th. Smith	Jones	Baskerville
Georgia Tech	Gash	Robbins	Simakas	Barker	Perry	Hollier	Timmons	Massey	Jordan	Jones	Baskerville
Maryland	Gash	Robbins	Boldin	Cu. Brown	Perry	Hollier	Thigpen	Massey	Jordan	Jones	Crocker
Clemson	Gash	Robbins	Boldin	Tripp	Perry	Hollier	Thigpen	Massey	Jordan	Jones	Baskerville
Virginia	Gash	Barker	Simakas	Tripp	Perry	Hollier	Thigpen	Massey	Jordan	Jones	Baskerville
Duke	Gash	Robbins	Simakas	Tripp	Perry	Hollier	Thigpen	Massey	Jordan	Jones	Baskerville

1990 GAME-BY-GAME DEFENSIVE STATISTICS

Game	Hollier	Thigpen	Gash	Jones	Timmons
	P-A-TOT-TFL	P-A-TOT-TFL	P-A-TOT-TFL	P-A-TOT-PBU	P-A-TOT-TFL
Miami	6-5-11-0	5-3-8-3	4-2-6-0	2-2-4-0	3-3-6-0
South Carolina	5-7-12-0	3-5-8-0	8-1-9-2	4-1-5-1	1-2-3-0
Connecticut	1-1-2-0	5-3-8-3	3-1-4-2	4-2-6-0	1-2-3-0
Kentucky	13-7-20-1	7-8-15-1	8-5-13-4	3-3-6-2	4-2-6
N.C. State	12-5-17-1	4-4-8-2	2-4-6-0	1-2-3-0	7-8-15-1
Wake Forest	5-10-15-1	9-5-14-1	1-2-3-0	2-2-4-0	6-1-7-0
Georgia Tech	12-9-21-0	8-4-12-2	7-2-9-2	9-5-14-1	3-4-7-0
Maryland	4-2-6-1	2-3-5-0	3-1-4-1	4-2-6-1	1-1-2-0
Clemson	8-7-15-1	8-5-13-0	5-3-8-1	10-9-19-0	5-3-8-0
Virginia	10-11-21-1	11-6-17-1	9-5-14-0	7-1-8-1	5-3-8-0
Duke	10-6-16-0	3-2-5-0	6-2-8-1	4-2-6-0	4-6-10-0

Game	Massey	Perry	Barker	Tripp	Jordan
	P-A-TOT-INT	P-A-TOT-TFL	P-A-TOT-TFL	P-A-TOT-TFL	P-A-TOT-PBU
Miami	2-0-2-1	4-1-5-2	2-3-5-1	2-1-3-0	4-2-6-0
South Carolina	3-0-3-0	3-3-6-2	5-0-5-2	6-1-7-1	4-1-5-1
Connecticut	11-1-12-1	0-2-2-0	3-0-3-1	2-0-2-0	0-0-0-0
Kentucky	4-2-6-0	4-5-9-2	3-1-4-1	3-3-6-0	2-0-2-0
N.C. State	2-4-6-0	3-3-6-2	5-2-7-0	5-2-7-0	1-0-1-0
Wake Forest	2-3-5-0	3-5-8-0	5-0-5-2	2-3-5-1	5-1-6-1
Georgia Tech	2-2-4-1	3-6-9-0	2-2-4-0	DNP-Injured	4-1-5-0
Maryland	3-0-3-0	1-1-2-1	3-1-4-1	1-1-2-1	4-2-6-0
Clemson	4-3-7-1	3-5-8-0	5-4-9-0	8-2-10-1	3-3-6-0
Virginia	5-5-10-0	2-4-6-0	6-2-8-0	1-6-7-0	1-1-2-0
Duke	4-4-8-1	3-6-9-0	5-3-8-2	3-5-8-1	6-2-8-1

P- Primary Tackles; A- Assists; TOT- Total Hits; TFL- Total Tackles for Losses; PBU- Passes Broke Up; INT- Interceptions.

1990 GAME-BY-GAME STATISTICS (TEAM)

	Miami		South Carolina		Connecticut		Kentucky		N.C. State		Wake Forest	
	UNC	MI	UNC	USC	UNC	CT	UNC	UK	UNC	NCSU	UNC	WF
Score	34	0	5	27	48	21	16	13	9	12	31	24
First Downs	16	10	13	22	23	21	13	18	8	18	24	20
Rush Attempts	57	42	37	41	52	28	45	49	44	43	52	44
Net Yards Rush	208	113	91	104	258	81	203	86	139	114	169	114
Rushing TDs	2	0	1	0	4	0	1	0	0	0	3	0
Pass Comp-Att.	8-17	9-26	11-26	24-40	14-26	23-46	4-13	16-30	6-20	16-37	18-24	15-34
Net Yards Pass	48	92	115	268	186	317	108	163	71	161	300	231
Pass INT	0	2	2	0	1	2	0	1	1	2	0	1
Pass TDs	1	0	0	2	1	3	0	1	0	0	1	3
Total Plays	74	68	63	81	78	74	58	79	64	80	76	78
Total Yards	256	205	206	372	444	398	311	249	169	244	469	345
KO Ret/Yards	1/25	5/46	4/102	2/32	3/76	8/119	3/64	4/85	0/0	3/68	4/78	4/78
Punt Ret/Yards	8/86	3/14	1/5	6/34	6/37	3/35	8/65	4/20	5/9	8/67	5/15	1/12
Punts/Ave.	9/45.7	10/35.3	8/44.0	4/51.3	3/50.0	7/30.4	7/40.3	8/41.4	11/42.7	7/35.1	5/44.4	7/36.0
Penalties/Yards	5/56	3/25	9/100	7/64	8/84	6/57	8/85	9/71	5/45	6/48	4/25	4/35
Fumbles/Lost	0/0	4/4	2/1	3/3	1/0	3/1	2/0	2/0	1/1	5/2	7/6	4/3
3rd Down Conv.	5-18	2-16	4-16	7-18	7-16	8-18	2-13	9-22	3-18	6-20	7-15	4-15
Poss. Time	31:49	28:11	25:46	34:14	31:11	28:49	25:21	34:39	27:46	32:14	30:31	29:29

	Georgia Tech		Maryland		Clemson		Virginia		Duke	
	UNC	GT	UNC	MD	UNC	CL	UNC	VA	UNC	DU
Score	13	13	34	10	3	20	10	24	24	22
First Downs	9	24	28	13	13	18	14	22	15	24
Rush Attempts	39	50	60	20	28	59	31	57	57	34
Net Yards Rush	103	252	208	7	38	235	86	171	319	103
Rushing TDs	1	1	1	0	0	1	1	1	3	1
Pass Comp-Att.	8-20	13-28	23-36	16-43	18-32	9-17	16-22	13-27	4-12	25-47
Net Yards Pass	48	183	312	214	157	69	236	179	48	337
Pass INT	0	2	1	3	1	1	0	0	1	1
Pass TDs	0	0	1	1	0	0	0	2	0	2
Total Plays	59	78	96	63	60	76	58	79	69	81
Total Yards	151	435	520	221	195	304	265	407	367	440
KO Ret/Yards	3/52	4/28	2/36	7/126	4/106	2/44	5/128	2/47	1/12	3/66
Punt Ret/Yards	2/15	6/20	3/12	1/4	2/14	5/53	3/39	4/31	5/17	5/46
Punts/Ave.	9/42.3	3/43.3	4/41.5	9/42.2	8/40.6	6/47.5	7/42.3	5/45.0	9/45.7	11/35.6
Penalties/Yards	3/26	4/20	1/10	10/60	6/42	9/80	4/45	2/20	7/60	10/73
Fumbles/Lost	0/0	4/2	1/0	2/0	3/2	0/0	5/2	1/1	1/0	1/0
3rd Down Conv.	3-15	9-16	8-20	4-16	4-15	8-18	4-13	9-18	5-17	4-16
Poss. Time	23:26	36:34	39:40	20:20	23:22	36:38	22:19	37:41	30:09	29:51